

# Lisa Premium Jeans

Hat with Cable Pattern and Pompom



# Lisa Premium Jeans

Hat with Cable Pattern and Pompom



## Quality:

Lisa Premium Jeans (Gründl)

100 % acrylic

50 g / 133 m

**Size:** Head circumference approx. 53 cm - 57 cm

**Usage:** approx. 100 g in col. 04 (mottled bottle green), 1 Pompom Panda from Gründl in col. 56 (fir green)

## Needles:

1 set of double pointed needles (dpns) in size 3,0 - 3,5mm and 4,0 - 4,5mm and 1 cable pin.

## Pattern:

Ribbing in rnds: (amount of sts multiple of 2)

Alt k1, p1.

Cable patt in rnds: (amount of sts multiple of 13)

Work according to chart.

Rep rnds 1 - 12 cont throughout.

## Tension:

26 sts and 23 rnds to 10 cm meas over ribbing using needle size 3mm or size needed to achieve given tension.

26 sts and 30 rnds to 10 cm meas over cable patt using needle size 4mm or size needed to achieve given tension.

## Instructions:

Using smaller dpns, cast on 110 sts and divide evenly onto 4 needles (27 or 28 sts on each needle). Close ring and work in ribbing for 4 cm (approx. 12 rnds) then work 1 rnd of k sts.

Change to larger needles and work in cable patt. (rep 10 times per rnd). In the first rnd, within the rep after every 6th and 10th st M1tbl (as shown in chart) (= 130 sts). When work meas approx. 18 cm in height (= 54 rnds), meas from the beg of cable patt, end with 6th rnd in patt. Then start with the decs (see chart for decs, rnds 7 - 20). Break yarn and thread through the last 10 sts and pull hole closed.

Weave in ends.

Sew on pompom.

## Abbreviations:

approx. = approximate(ly) • beg = begin(ning) • cn = cable needle (pin) • col = colour(s) • cont = continue (continuously) • dec = decrease • dpn(s) = double pointed needle(s) • foll = follow(ing) • k = knit • M1tbl = make 1 through back loop • meas = measure(d) • p = purl • patt = pattern • pssso = pass slipped stitch over prev knit st(s) • rep = repeat • rnd(s) = round(s) • skp = sl 1, k1, pssso • sl = slip • st(s) = stitch(es) • tbl = through back loop • tog = together

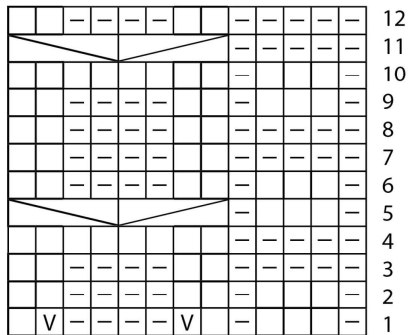
# Lisa Premium Jeans

## Hat with Cable Pattern and Pompom

### Strickschrift Zopfmuster:

Cables Chart:

Grille des torsades :



Rapport = 13 M  
Repeat = 13 sts  
13 m. à rép.

= 1 M li  
p1  
1 m. env.

= 1 M re  
k1  
1 m. end.

= 4 M nach links verkreuzen (= 2 M auf eine Hilfsnadel vor die Arbeit legen, 2 M li str., dann die M der Hilfsnadel re str.)  
4 st left purl cable (= sl 2 sts to cn and hold to front of work, p2, k2 from cn).  
croiser 4 m. vers la gauche (= glis. 2 m. sur l'aiguille à torsades placée devant le travail, tric. 2 m. env. puis les m. de l'aiguille à torsade à l'end.)

= 4 M nach rechts verkreuzen (= 2 M auf eine Hilfsnadel hinter die Arbeit legen, 2 M re str., dann die M der Hilfsnadel li str.)  
4 st right purl cable (= sl 2 sts to cn and hold to back of work, k2, p2 from cn).  
croiser 4 m. vers la droite (= glis. 2 m. sur l'aiguille à torsades placée derrière le travail, tric. 2 m. end. puis les m. de l'aiguille à torsade à l'env.)

= **nur 1 x** in der 1. Rd. des Zopfmusters: 1 M re verschr. aus dem Querfaden herausstricken, in den folgenden Rd. ist es 1 M re  
**Work only once in the 1st rnd of the cable patt: M1tbl, in the foll rnd k the new st.**  
**seulement 1 x** au 1e t. des torsades, tric. en m. end. torse le fil entre 2 mailles, au t. suivant tric. cette m. à l'end.

= 2 M li zus. str.  
p2tog  
2 m. ens. à l'env.

= 2 M re überz. zus. str. (= 1 M re abh., 1 M re str., abgehobene M darüber ziehen)  
skp ( sl 1, k1, pss0)  
2 surjet simple (= glis. 1 m. prise à l'end., tric. 1 m. end. puis passer la m. glis. par-dessus la m. tric.)

= 2 M re zus. str.  
k2tog  
2 m. ens. à l'end.

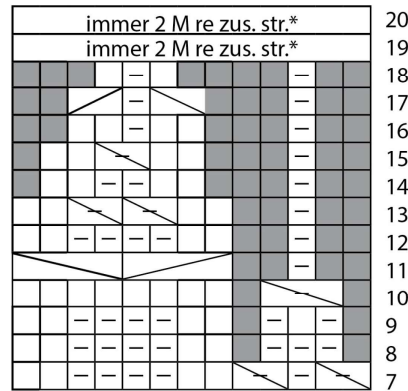
= 3 M li zus. str.  
p3tog  
3 m. ens. à l'env.

= keine bzw. abgenommene M, beim Stricken nicht berücksichtigen  
no stitch (placeholder in the chart; marks a stitch that has been decreased)  
m. disparue suite aux diminutions, en tricotant ne pas tenir compte de cette case.

### Strickschrift Abnahmen:

Decrease Chart:

Grille des diminutions :



Rapport = 13 M  
Repeat = 13 sts  
13 m. à rép.

\* immer 2 M re zus. str.  
k2tog continuously  
tric. tjs 2 m. ens. à l'end.

# Lisa Premium Jeans

Hat with Cable Pattern and Pompom

