



Wika
Owl basket

S10771





S10771

V.1/KD/DS

Wika Owl basket

Design: Schachenmayr Designteam



Crochet



Intermediate



Recommended Yarn

SIZE

Unless otherwise specified, all cm measurements given in the instructions refer to sizes before felting.

Before felting: ca. 30 cm Diameter, 34 cm tall.

After felting: ca. 24 cm Diameter, 24 cm tall.

MATERIALS

Schachenmayr Wash+Filz-it! 50 g ball

Approx. 50 g = 50 m

Col. 00002 (white)	1 ball
Col. 00021 (steel)	1 ball
Col. 00020 (blanket)	6 balls
Col. 00001 (black)	1 ball

Yarn amounts are approximate. Make sure to purchase enough of the same dye lot in order to complete your project. The colour names refer to the names on the sleeves. The amount of yarn needed can vary from person to person.

1 crochet hook 7,0 mm

1 tapestry needle for weaving in loose threads

GAUGE

Before felting: approx. 30 cm Diameter: 34 cm tall.

After felting: approx. 24 cm Diameter: 24 cm tall.

BASIC TECHNIQUES

Crochet Pattern:

Work dc in rnd. From rnd 2 work the dc between the dc of the previous rnd. Start each rnd with 3 ch (counts as 1st dc) and close with 1 sl st in the top of the 3 ch.

Work the owl according to the chart. When changing color, fasten off the last dc with the next color and turn over after every rnd so that the colored areas can be worked.

Increase every dc:

Work 2 dc between the dc of the previous rnd.

INSTRUCTIONS

Ch 4 in Black and work 15 dc in the 1st ch = 16 dc. Close with 1 sl st.

Rnd 2: Increase every other dc 8x = 24 dc.

Rnd 3: Increase every third dc 8x = 32 dc.

Rnd 4: Increase every other dc and then increase every fourth dc 7x = 40 dc.

Rnd 5: Increase every fourth dc 10x = 50 dc.

Rnd 6: Increase every fifth dc 10x = 60 dc.

Rnd 7: Increase every fifth dc 12x = 72 dc.

Rnd 8: Increase every sixth dc 12x = 84 dc

Rnd 9: Work 1 front post double crochet around every dc of the previous rnd = 84 dc. This rnd corresponds to the 1st round of the chart.

Tip:

The unfelted base should be slightly wavy at the edge so that the basket will stand flat once it's been felted.

Continue working dc in rnd working the motif over the middle 28 dc according to the chart. Make sure you turn the work over at the end of every rnd.

After rnd 20 of the chart, work 1 rnd sc working them between the dc of the last rnd. To stabilize the upper edge, work 1 rnd sl st on both the right and the left.

Then make two eyes and a beak.

Eyes:

Ch 4 in Black and close to a ring with 1 sl st. Work 10 sc in rnd 1 replacing the 1st sc with 2 ch and closing the rnd with 1 sl st. In rnd 2, work 2 hdc in each sc of rnd 1 working 1 hdc in Black and 1 hdc in Steel alternately. Replace the 1st hdc with 2 ch and closing rnd 2 with 1 sl st.

Work the 2nd eye in the same way.

Beak:

Ch 7 in Black. Work 4 dc in row 1 working the 1st hdc in the 4th ch from the hook. Then work 1 hdc in the remaining 3 ch. Ch 1 and turn over. Work 1 sc in every dc of the previous row = 4 sc. Then work 1 sc in the last 3 ch at the beginning, work 1 dc and 1 sc (= tip of beak). Finally work 1 sc in every ch at the beginning = 4 sc.



FINISHING OFF

Sew the eyes and the beak on to the basket as per the illustration.

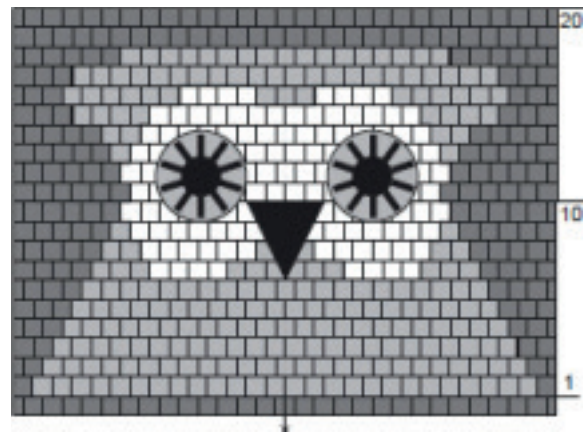
To felt, wash the basket in the washing machine at 40 °C. Use a color detergent; do not use wool detergent or fabric softener. Choose a wash program with a sufficient water level, e.g., gentle cycle with a spin cycle; do not use a special wool cycle. The basket will shrink by approx. 30% in the washing machine.

If the basket is still too large or insufficiently felted after the first wash, wash it again at 40 °C or choose a different wash program. After washing, block the basket firmly into shape and allow to dry. The basket will dry faster if you place a washcloth or small towel inside while drying. Once the basket has dried, brush the basket with transparent latex milk and allow to dry thoroughly.

ABBREVIATIONS (US)

st	= stitch
sc	= single crochet
sl st	= slip stitch
ch	= chain
dc	= double crochet
st(s)	= stitch(es)
rnd(s)	= round(s)

Chart



center

Key

	= 1 dc in White
	= 1 dc in Blanket
	= 1 dc in Steel