



Summerstripes
Plaid

S9406





S9406

V.1/EW

Summerstripes Plaid Crochet blanket

Design: Schachenmayr Designteam



Recommended Yarn

SIZE

Width ca. 108 cm, length ca. 128 cm

MATERIALS

Schachenmayr Catania, 50 g ball
approx. 50 g = 125 m

Col. 00106 (weiß)	4 balls
Col. 00222 (orchidee)	3 balls
Col. 00114 (cyclam)	3 balls
Col. 00208 (sonne)	3 balls
Col. 00253 (jade)	3 balls
Col. 00146 (pfau)	3 balls
Col. 00205 (apfel)	2 balls

Schachenmayr Catania color, 50 g ball
approx 50 g = 125 m

Col. 00093 (afrika color)	3 balls
---------------------------	---------

Yarn amounts are approximate. Make sure to purchase enough of the same dye lot in order to complete your project. The colour names refer to the German names on the sleeves. The amount of yarn needed can vary from person to person.

1 crochet hook 4,0 mm
1 blunt needle yarn needle for weaving in ends

GAUGE

Work according to the chart:
20 st and 25 rows = 10 cm x 24 cm.
If your gauge differs from the given gauge, use a hook of a larger or smaller size accordingly.

THE BASICS

Crochet Pattern: Multiples of 8 st + 1 + 3 tch. Work according to the chart, beginning as illustrated. Repeat the 8-stitch pattern and finish as depicted; in the double crochet rows, replace the 1st st with 3 ch. Repeat rows 1 to 25. The 1st unlabelled row is the 1st row dc at the beginning of the work.

Work Norwegian pattern in the 22nd row: Work using 2 threads in different colours with the unused yarn lying on the loops of the previous rnd to be covered by the hook in the following stitch.

INSTRUCTIONS

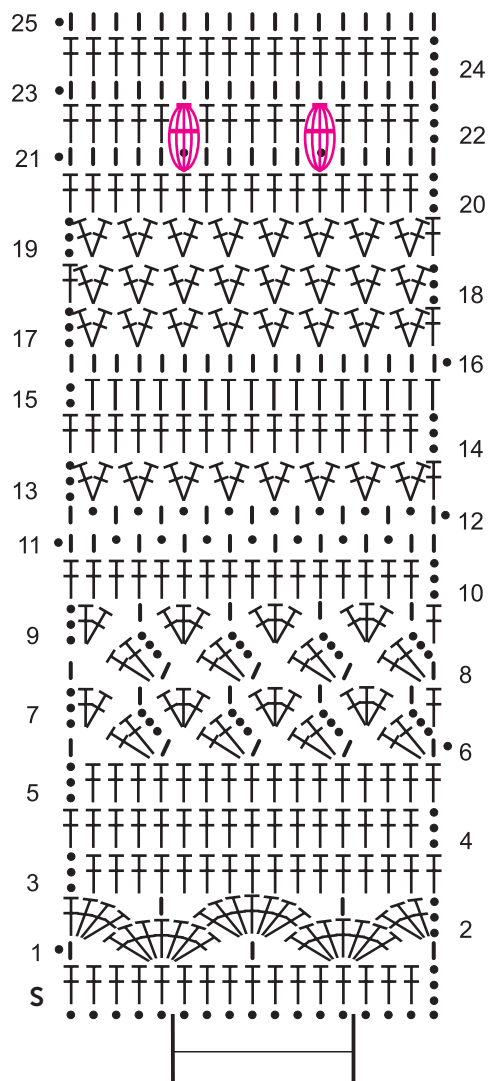
With White, ch 212. Working first dc in 4th ch from hook, work dc for one row (= first row on chart not designated with a number). Next, work in crochet pat according to chart, beginning chart pat with sts before pat rep, then working the 8-st pat rep 25 times and ending with sts after pat rep. Work rows 1 – 25, 5 times, working color sequence 1 – 5. Next, with White work chart row 1, with Afrika, work chart row 2 and with Jade, work chart row 3. Fasten off.

FINISHING OFF

Work a rnd of sc all around the blanket using Afrika, work 3 sc in every corner. In Weiß, work 1 rnd dc, work 5 dc in every corner. Work 1 rnd of picots in Cyclam as follows: ★ 4 sc, ch 3, 1 sc in the 1st of the 3 ch, repeat from ★. close rnd with 1 sl st. Dampen and block the blanket, and allow to dry. Weave in all ends with a tapestry needle.





ABBREVIATIONS

st	= stitch
sc	= single crochet
slst	= slip stitch
ch	= chain
dc	= double crochet
hdc	= half double crochet
st(s)	= stitch(es)
tch	= turn chain



Row	Color sequence 1	Color sequence 2	Color sequence 3	Color sequence 4	Color sequence 5
25	Weiß	Weiß	Weiß	Weiß	Weiß
24	Cyclam	Sonne	Jade	Afrika color	Pfau
23	Cyclam	Sonne	Jade	Afrika color	Pfau
22	Cyclam/ Orchidee	Sonne/ Cyclam	Jade/Sonne	Afrika color/ Jade	Pfau/ Afrika color
21	Cyclam	Sonne	Jade	Afrika color	Pfau
20	Cyclam	Sonne	Jade	Afrika color	Pfau
19	Sonne	Jade	Afrika color	Pfau	Apfel
18	Jade	Afrika color	Pfau	Apfel	Orchidee
17	Afrika color	Pfau	Apfel	Orchidee	Cyclam
16	Weiß	Weiß	Weiß	Weiß	Weiß
15	Weiß	Weiß	Weiß	Weiß	Weiß
14	Pfau	Apfel	Orchidee	Cyclam	Sonne
13	Apfel	Orchidee	Cyclam	Sonne	Jade
12	Weiß	Weiß	Weiß	Weiß	Weiß
11	Orchidee	Cyclam	Sonne	Jade	Afrika color
10	Orchidee	Cyclam	Sonne	Jade	Afrika color
9	Weiß	Weiß	Weiß	Weiß	Weiß
8	Weiß	Weiß	Weiß	Weiß	Weiß
7	Cyclam	Sonne	Jade	Afrika color	Pfau
6	Sonne	Jade	Afrika color	Pfau	Apfel
5	Jade	Afrika color	Pfau	Apfel	Orchidee
4	Afrika color	Pfau	Apfel	Orchidee	Cyclam
3	Weiß	Apfel	Orchidee	Cyclam	Sonne
2	Pfau	Orchidee	Cyclam	Sonne	Jade
1	Apfel	Weiß	Weiß	Weiß	Weiß

KEY

- = chain (ch)
- I = single crochet (sc)
- T = half double crochet (hdc)
- ⋈ = double crochet (dc)
-  = 7 dc in same stitch
-  = (1 sc, ch3, 2 dc) in same stitch
-  = 2 dc in same stitch
-  = 1 deep cluster stitch
(work 1 cluster stitch from 5 dc, inserting the hook in the dc 2 rows lower down)