



Recommended Yarn



S10673A/B/C

Gryt Hållare (A), Grita Hållare (B),  
Gyla Hållare (C)

[schachenmayr.com](http://schachenmayr.com)

Follow us     

MEZ GmbH, 2020. All rights reserved.






S10673A/B/C

V.1/JS/DS

# Gryt Hållare (A), Grita Hållare (B), Gyla Hållare (C)

Crochet Intermediate 

Design: Jennifer Stiller

## SIZE

### Width

approx. 19 cm

### Length

approx. 19 cm

## MATERIALS GRYT HÅLLARE (A)

### Schachenmayr Catania, 50 g ball

approx. 50 g = 125 m

Col. 00402 (reseda) 1 ball

Col. 00105 (natur) 1 ball

## MATERIALS GRITA HÅLLARE (B)

### Schachenmayr Catania, 50 g ball

approx. 50 g = 125 m

Col. 00402 (reseda) 1 ball

Col. 00429 (anthrazit) 1 ball

## MATERIALS GYLA HÅLLARE (C)

### Schachenmayr Catania, 50 g ball

approx. 50 g = 125 m

Col. 00105 (natur) 1 ball

Col. 00429 (anthrazit) 1 ball

Yarn amounts are approximate. Make sure to purchase enough of the same dye lot in order to complete your project. The colour names refer to the German names on the sleeves. The amount of yarn needed can vary from person to person.

1 crochet hook, 5.0 mm

1 tapestry needle for weaving in ends

## ABBREVIATIONS:

|        |                       |
|--------|-----------------------|
| st     | = stitch              |
| sc     | = single crochet      |
| slst   | = slip stitch         |
| ch     | = chain               |
| dc     | = double crochet      |
| hdc    | = half double crochet |
| st(s)  | = stitch(es)          |
| rnd(s) | = round(s)            |

## GAUGE

**Basic pattern:** 16 sts and 17 rows = 10 x 10 cm

Adjust your needle size if necessary to obtain the correct gauge.

## BASIC PATTERN

### Basic pattern

Multiples of 4 st (incl. tch).

Work according to the chart.

Work the 1st row, then repeat rows 2 through 9 for pattern.

### Front post treble crochet

Wrap the yarn just once around the hook, insert hook from the front around the neck of the dc and draw through.

There are now 3 loops on the hook.

Draw through 2 of the 3 loops.

Pick up the yarn again and draw through both loops.

## INSTRUCTIONS

Start loosely with a double length of Reseda + Natur, Reseda + Anthrazit and Natur + Anthrazit : Ch 27 + 1 tch.

**Row 1:** Work 1 sc in every st with the 1st sc in the 2nd ch from hook, 1 tch, turn over (= 27 st).**Row 2:** Work 1 sc in every st, 1 tch, turn over (= 27 st).**Row 3:** \* 3 sc, 1 fpdc (1 st back, 2 rows lower), rep continuously from \*. Finish the row with 3 sc, 1 tch, turn over (= 27 st).**Row 4:** Work 1 sc in every st, 1 tch, turn over (= 27 st).**Row 5:** 4 sc, \* 1 fpdc (1 st back, 2 rows lower or from the 11th row around the fpdc below), 3 sc, rep continuously from \*. Finish the row with 1 fpdc and 2 sc, 1 tch, turn over (= 27 st).**Row 6:** Work 1 sc in every st, 1 tch, turn over (= 27 st).**Row 7:** 1 sc, 1 fpdc (1 st back, 2 rows lower).

Then \* 3 sc, 1 fpdc (around the fpdc below), rep continuously from \*. Finish the row with 1 sc, 1 tch, turn over (= 27 st).

**Row 8:** Work 1 sc in every st, 1 tch, turn over (= 27 st).**Row 9:** 2 sc, \* 1 fpdc (around the fpdc below), 3 sc, rep continuously from \*. Finish the row with 1 sc, 1 tch, turn over (= 27 st).**Rows 10–25:** Repeat rows 2–9 twice (= 27 st).**Row 26:** Work as row 2 (= 27 st).**Row 27:** Work as row 3 (= 27 st).**Row 28:** Work as row 4 (= 27 st).**Row 29:** Work as row 5 (= 27 st). Ch 1, do not turn over.



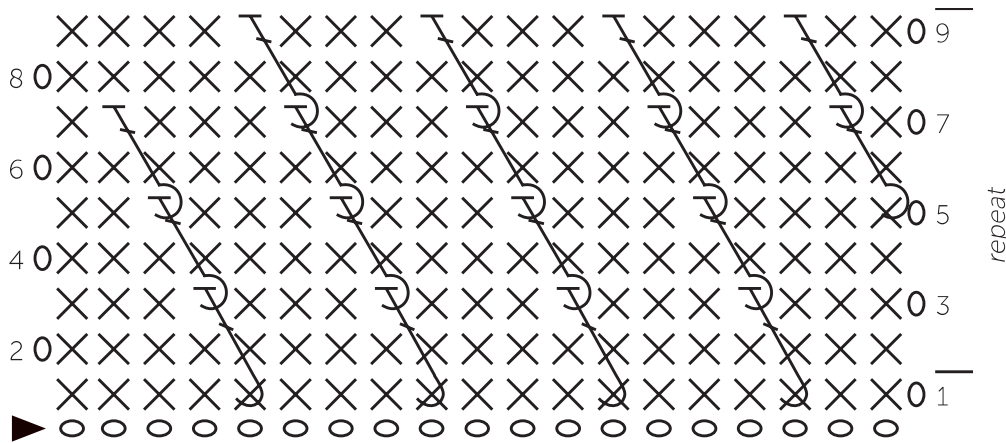
## FINISHING OFF

Continue by crocheting around the pot holder with sc.  
Work 1 sc in each st or row. Work 1 sc + 1 ch + 1 sc in 1 st in each corner.

Close rnd with 1 sl st. For the hanging loop, ch 14 and attach to the pot holder next to the foundation chain with 1 sl st and 1 st. Ch 1, then work back along the foundation chain with sl st.

Draw through and fasten off all threads. Dampen and block the pot holder to the right size, and allow to dry.

### Chart



### Key chart

- ▶ = start
- = ch 1
- X = 1 sc
- ⌋ = 1 fpdc