

Instructions for a sewn school cone

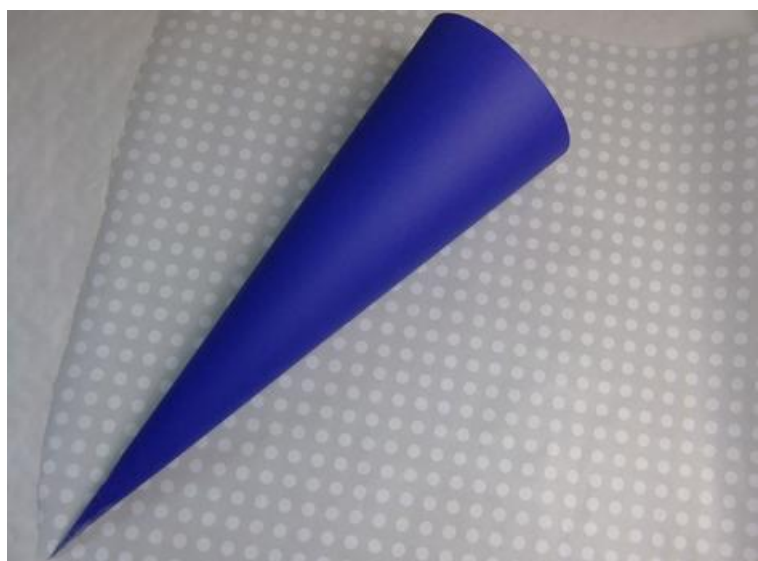
Instructions No. 1360

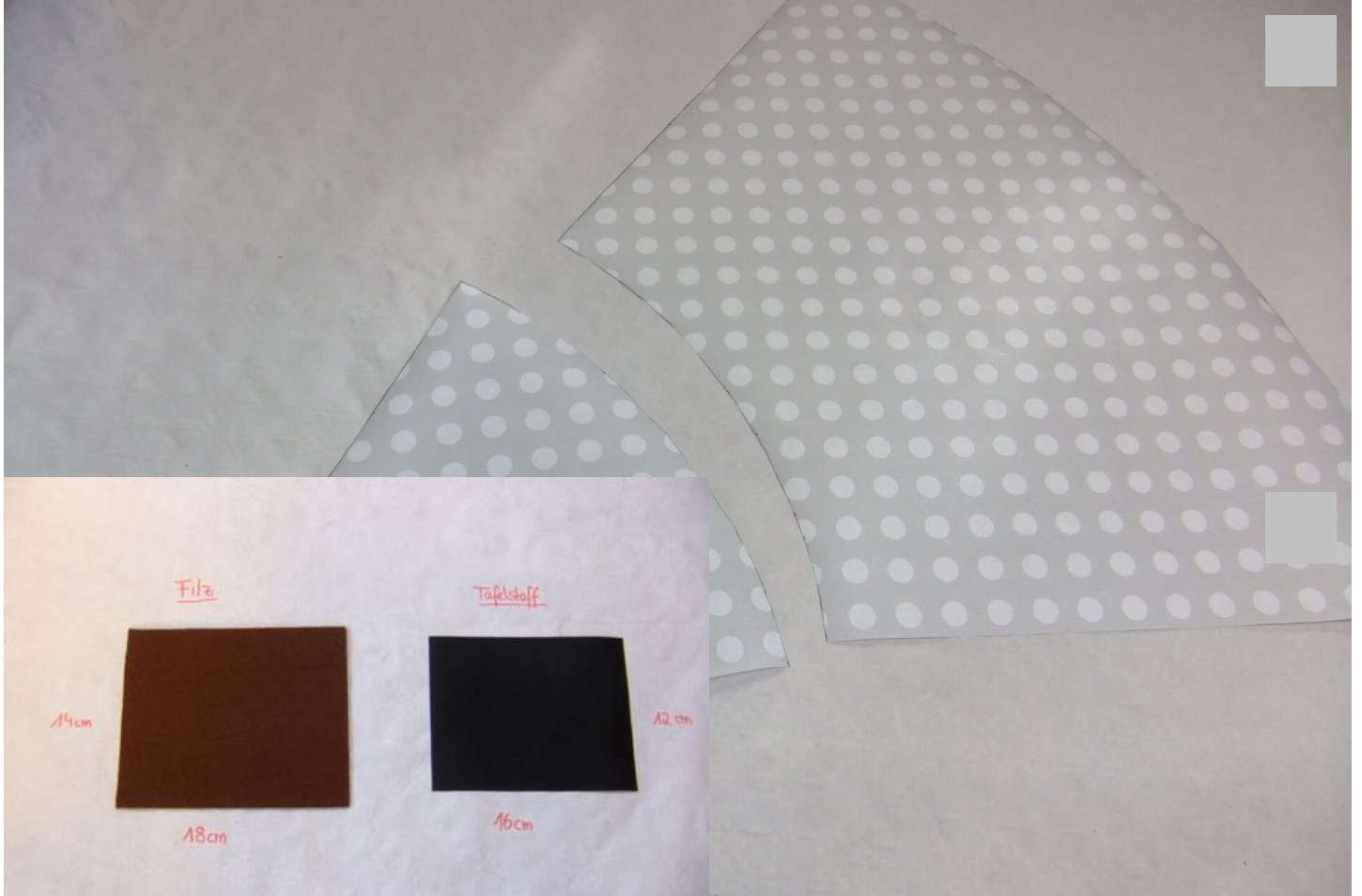
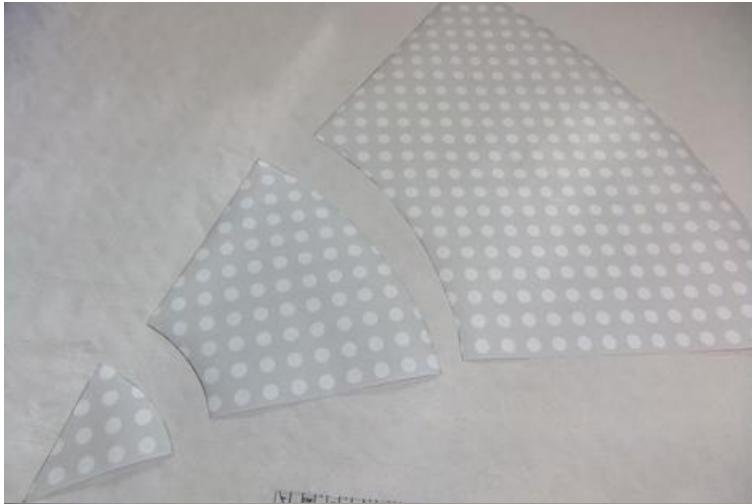
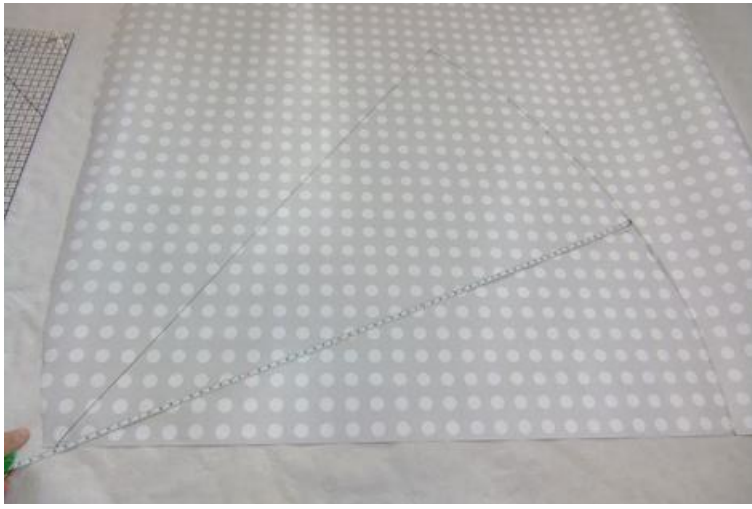
Difficulty: Advanced

Working time: 1 hour 30 Minutes

This tulle bag's gonna need stitches! Thus the schooling becomes an unforgettable result. On the school bag you can sew Chalkboard fabric or embroider the name of the child or apply a Motv. And the best thing is: After school enrolment, the school bag turns into a great cuddly cushion!







Filz

Tafelstoff

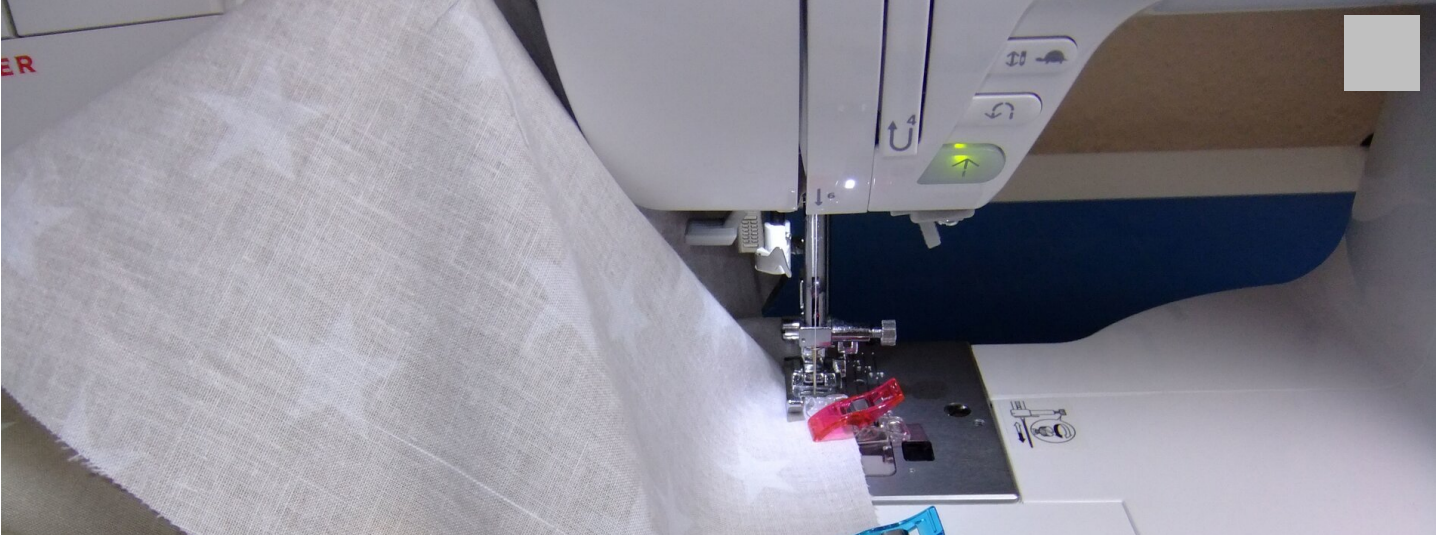
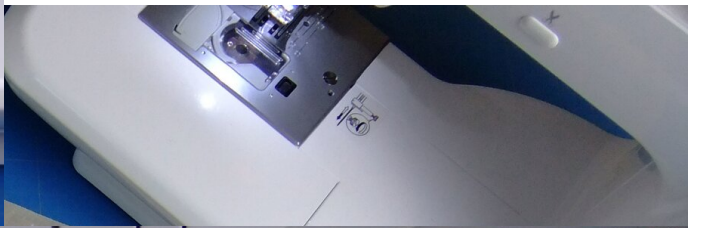
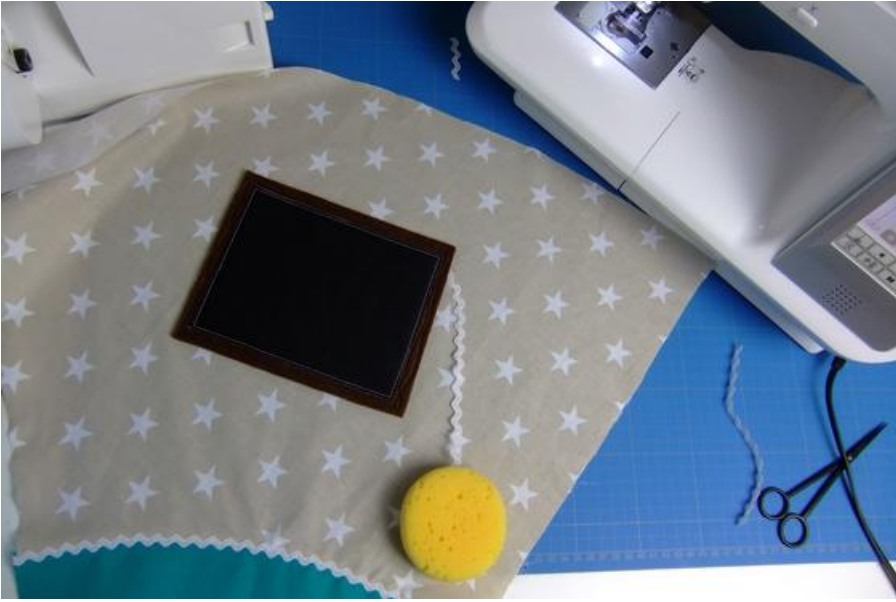
14cm

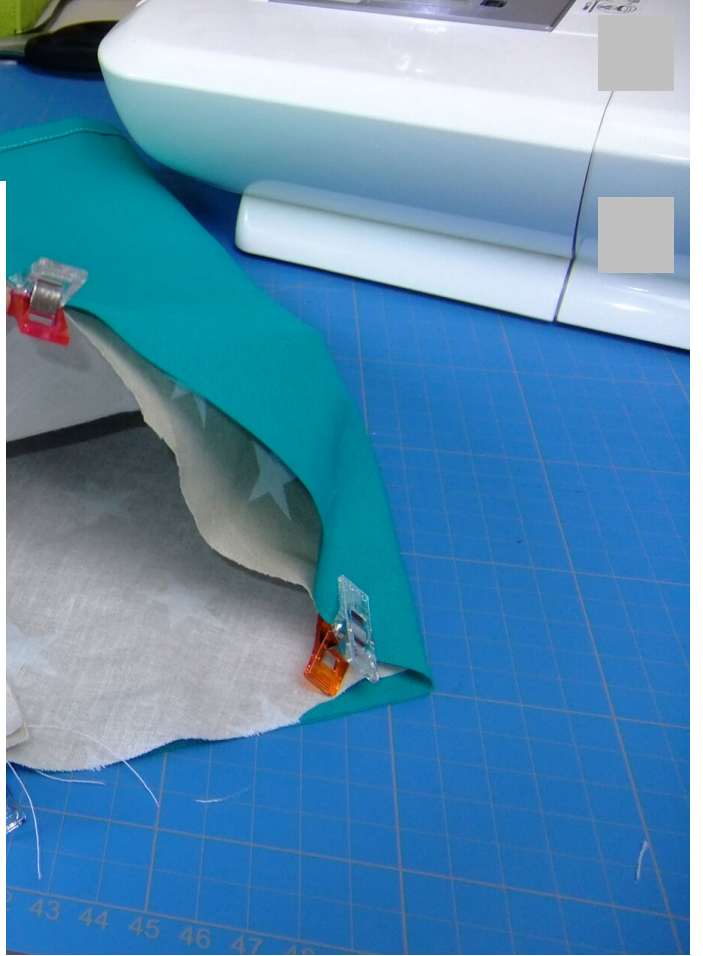
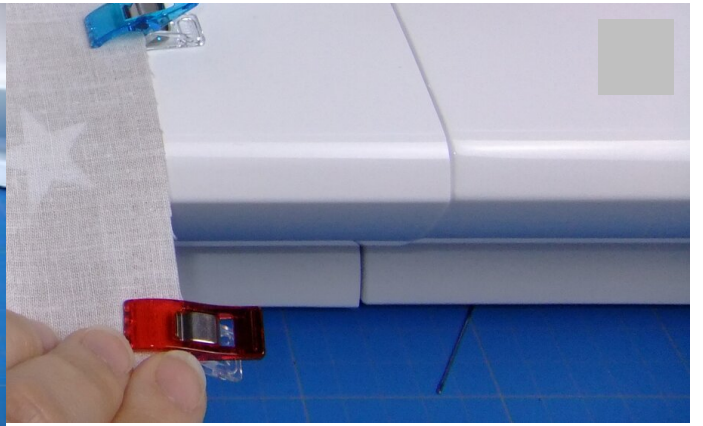
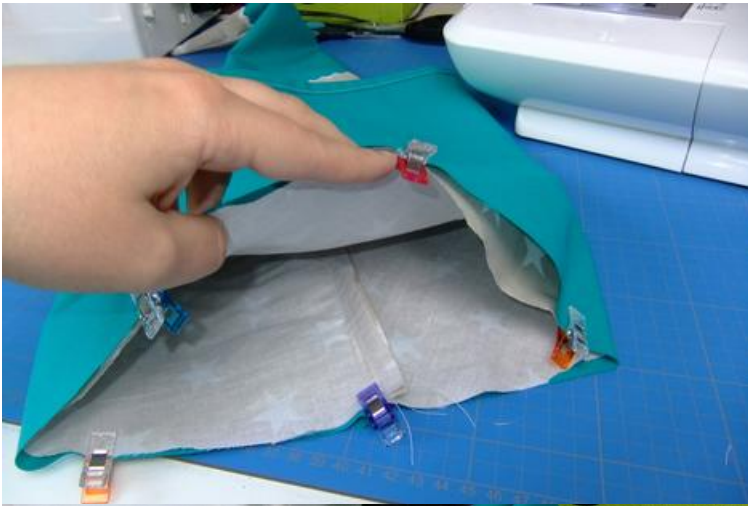
12cm

18cm

16cm









Cotton fabric "Stars Pastel", Nature

13,35 CHF

(1 m2 = 9,21 CHF)

[Item](#)
[details](#)

Quantity:

Add to shopping cart

