

Illuminated decorative ring in natural look

Instructions No. 2904

Difficulty: Beginner

Working time: 1 hour

When the days outside get darker again, it's especially cosy at home when we can make ourselves comfortable with cosy light sources.

This idea is a great inspiration for you, how you can arrange a contemporary light decoration in natural look with little effort in a short time.

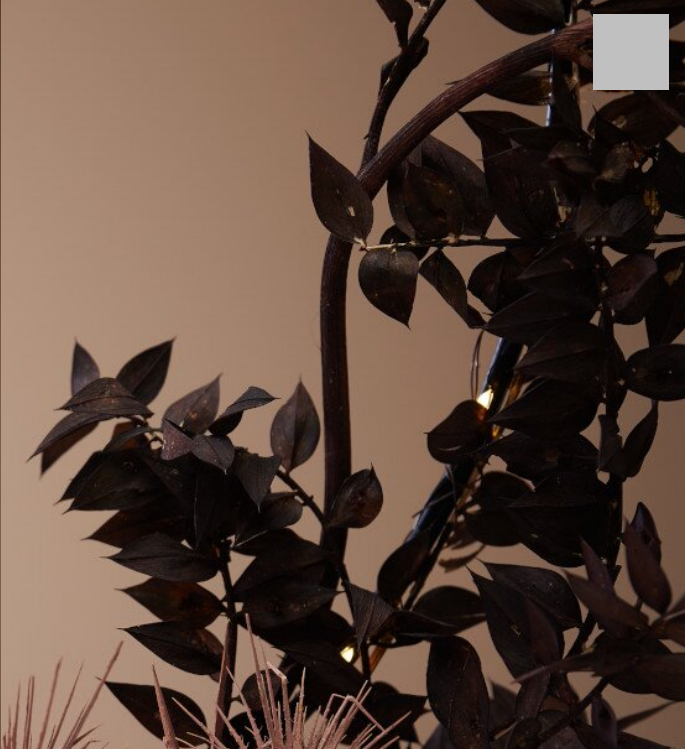
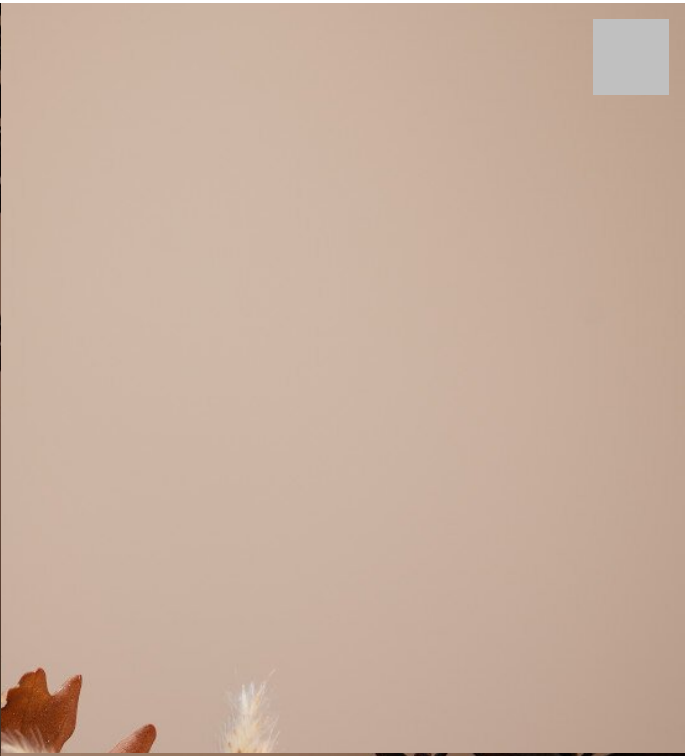
How to make a new light decoration for autumn and winter

First tie the micro LED chain of lights around the metal ring. The battery compartment should be fixed with wire in a place that will later be covered with dried flowers.

Now arrange dried flowers on both sides of the tealight spout in the lower half by tying them to the metal ring with binding wire. Use the natural flowers according to your personal taste.

Finally, simply place an LED tea light in the spout and hang your decoration on a branch, curtain rod or hook in the room.







Metal ring "Lindsey" for tea light to hang

8,90 CHF

[Item](#)
[details](#)

Quantity:

1

[Add to shopping cart](#)

